

Island Pacific

NOW 2 STORES 2 SERVE YOU IN LOS ANGELES

(SUPER SALE AT ISLAND PACIFIC IN LOS ANGELES)



T rue to its goal of providing exceptional customer service to all its customers, Island Pacific had recently opened a second branch in Los Angeles. Now customers will find Island Pacific as the most accessible Filipino market in Los Angeles. Island Pacific opened its first location 3 years ago in Los Angeles at 627 North Vermont Avenue. Due to the success of that store and customer demand, Island Pacific recently opened another branch in Los Angeles at 229 South Vermont Avenue. Customers will find the freshest meat, seafood, and produce at everyday low prices. Island Pacific also boasts the most complete line of national brand Filipino products imported from Philippines.



vice, wide selection, and one-stop shop location, there really is no reason to shop anywhere else in Los Angeles.

Tropical Atmosphere

When you enter Island Pacific, you will be greeted with the friendliest customer service. The Island Pacific difference that you will also notice is its spectacular Tropical ambiance. Island Pacific shopper Reggie Macalintal commented, "Parang nagbabakasyon ako sa Boracay pag namimili ako sa Island Pacific. Ang ganda nang tropical theme sa loob nang tindahan. Ang galing pa nang customer service dito. Bawat kanto nang tindahan may empleyado na bumabati at handang tumulong sa amin. Parang nakabakasyon kami sa isang high-end beach resort" Island Pacific is in the process of remodeling all other Island Pacific to make sure that the customers feel like they are on vacation and feel relaxed when they shop at any Island Pacific location. Shopping at Island Pacific is a great break from the stresses of work.

Most Accessible Store in Los Angeles

With the opening of its second location in Los Angeles, Island Pacific will be the most accessible Filipino store in Los Angeles. Whether they live closer to North Vermont Avenue or South Vermont Avenue, they will find an Island Pacific within walking distance. Not only will customers find Island Pacific very accessible but they will also enjoy the same low prices whichever Island Pacific they choose. All Grand Opening Sales available in the South Vermont Island Pacific will also be available in the existing North Vermont location. Whichever Island Pacific they choose to shop in Los Angeles, they will enjoy the same lowest price in meat, seafood, produce, and grocery selection.

will also have countless number of Grocery items on sale. So when it comes to looking for the lowest price in town, there is no other place to shop but Island Pacific.

One Stop Shop

Island Pacific boasts a complete line of Meat, Seafood, Produce, and Grocery products which makes it a one-stop shop

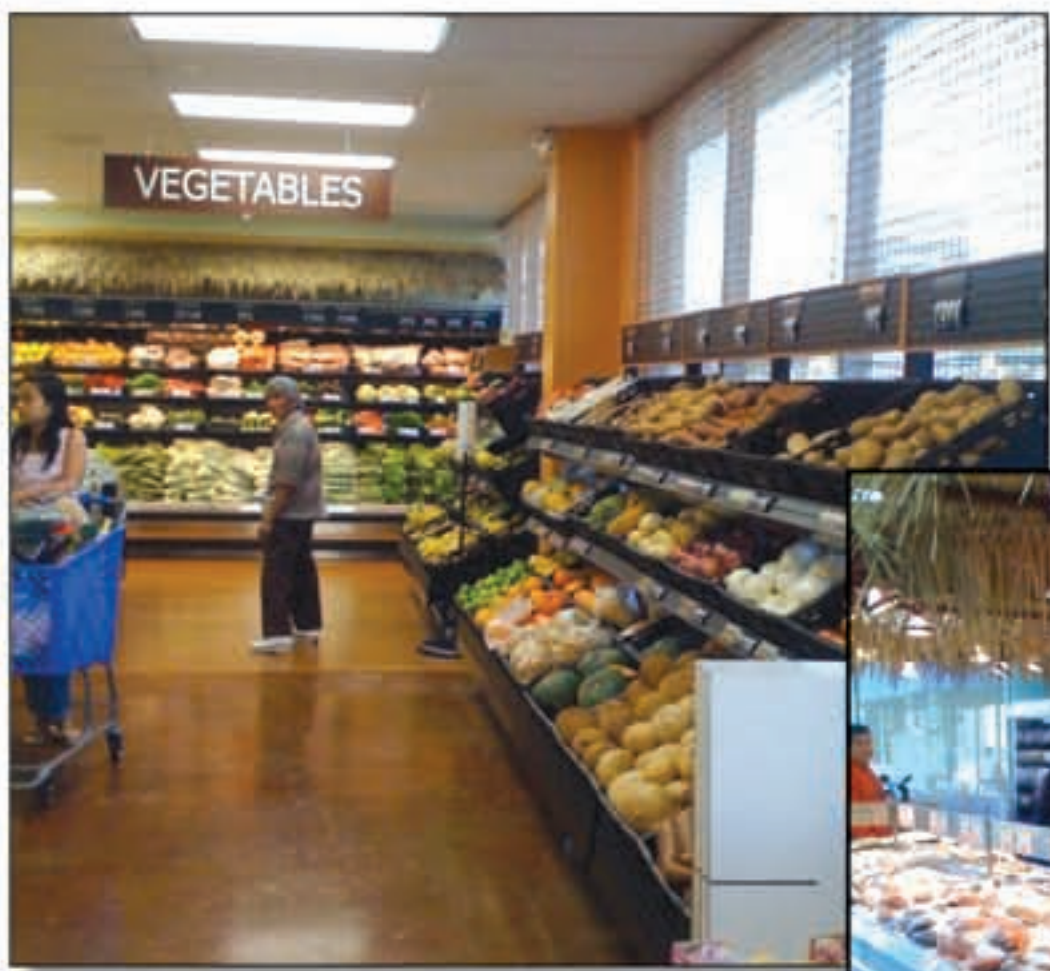
for all your grocery needs. The new Island Pacific location in South Vermont Street will also be a one-stop destination for all Filipino shoppers. Opened already beside Island Pacific's new location are popular Filipino businesses such as: Manila Good-Ha, Goldilocks Bakeshop, Kowloon, Banco de Oro Remittance, RP Travel, and Johnny Air Cargo. With its lowest prices, exceptional ser-

Island Pacific in Los Angeles is located at 229 South Vermont Street, Los Angeles, CA 90004 and 627 North Vermont Street, Los Angeles, CA 90004.

Other Island Pacific locations are in Panorama City, Cerritos, Vallejo, Union City, and West Covina.

Grand Opening Super Sale at Island Pacific in Los Angeles

To celebrate the opening of its new location in Los Angeles, Island Pacific will provide many items on reduced prices. The meat department will have many USDA-approved meat on sale. Some of the sale of the meat department are: Pork Butt (boneless) for \$0.99, Chicken Drumette Mix for \$0.99, Pork Leg Roast for \$0.99, and Pork Meat with Bone (perfect for Sinigang) for only \$0.99. For its huge Seafood Department, Island Pacific will have the following items on sale: Large White Shrimp H-On for \$2.99 per pound, Jumbo Squid for \$0.99 per pound, Half Shell Mussels for \$2.99 per case, Sea Bass Goo for \$0.50 per pound, Pompano for \$1.29 per pound, and imitation crab meat for \$0.99. In its Fresh Produce Department, some of the items Island Pacific will have on sale are: Cabbage and Seedless Watermelon for \$0.20 per pound, Chinese Eggplant at 3lbs for \$0.99, and Bittermelon at 2lbs for \$1. Island Pacific



Now Serving you!
627 N. Vermont Ave
Los Angeles, CA 90004
Tel. # (323) 671-1020

NOW OPEN!!!
225-229 S. Vermont Ave
Los Angeles, CA 90004
Tel. # (213) 674-2980