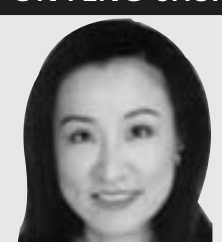


ON FENG SHUI



JENNY LIU

The Condo that Couldn't - Feng Shui Case Study

room. It was located in the northwest sector and thus incompatible to her. Being of the wood element, a bedroom in the northwest associated to the masculine metal element defeats Delphine, negatively affecting her health and her love relationships. Men tend to take advantage, hurt, or dominate her. Also, the room size only allowed a twin bed so she was likely to be a lonely lady here. On a health level, she needs to be careful of her liver, arms, and legs, and she will feel tired as the room depletes her energy.

I explained to Delphine that people often settle for homes that match their energy at the time when they are looking for a home. Delphine agreed. She found this condo after ending an intense six-year relationship and didn't want anything to do with men at that time. She does feel constantly tired and unmotivated to expand in her career. On top of that, the northwest hosts the Star 1, which can bring sexually charged, unethical men. She needs to be cautious. Delphine reveals that she has encountered sexually aggressive men, especially this year.

In the long run, it was not recommended for Delphine to stay there. Delphine was not surprised to hear this. She has always felt it, but her choices were limited. I told her this is not completely true. I explained that when you live in a place that is limiting, your perception of opportunities becomes limited, too.

When we were done, I had three pages of recommendations for Delphine. The most important ones were for her to use her promoting element of fire to weaken the metal element

energy of her northwest room. Delphine can implement this by using colors such as red, pink, or burgundy in her room with paint, bedding, light, or curtains. Rose quartz crystals around her bed will promote positive relationships and releasing stress, and a strong adjustment such as a Chi Art with mantra charms and symbols for enhancing her health and love on the wall next to her bed would greatly benefit her.

Finally, to activate more movement and wealth in her front door area, I recommended she use her other promoting element of water by placing either a Chi Art or artwork of water with an abundance of fish in the entry. I also told Delphine to spend more time in her dining room area, which was located in her positive southeast direction.

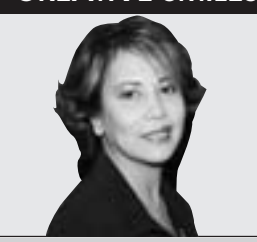
At the end of our session, Delphine told me that she knew about feng shui and wished she had consulted me six years ago when she was looking for a new home. She wonders where she would be now if she had.

Jenny Liu is a fourth generation feng shui master and is available for residential and commercial consultations. To learn more, please see her website at Liu-FengShui.com, or call her at (626) 272-4901 for a free estimate. Mention this article in Asian Journal and receive a 10% discount.

Guide to a Harmonious 2009-156 pages, full color, soft cover - on sale now for \$25 or two for \$45. To order or preview book, go to www.Liu-FengShui.com or call Julie at (626) 862-1788. Audio book format also available. Download a FREE Zodiac Scroll and see our FREE Library Seminar Calendar at Liu-FengShui.com. Join Jenny Liu for Feng Shui Tea Time: 2009 Feng Shui on Saturday January 31, 2009. For more information call Julie at (626) 862-1788.

(Advertising Supplement)

CREATIVE SMILES



DR. NELLY LYN MONTILLA

Diabetics are at risk for dental infections

DIABETES is a disease that affects the way your body uses food. There are two types. Type 1 is referred to as insulin dependent or immune-mediated diabetes, and is caused by the inability of the pancreas to produce insulin. Insulin is necessary for the vast number of blood cells in our body to use glucose, a sugar that helps sustain life. Type 2 is often referred to as non-insulin dependent or adult onset diabetes and is the much more common form, occurring in roughly 90% of the cases. With type 2 diabetes, your body does not make enough insulin or cannot properly use it. Your physician has most likely informed you of the complications of untreated or poorly controlled diabetes, which include kidney failure, gangrene or possible amputation of the lower extremities (legs and feet), blindness, or

stroke. As dentist, I am mainly concerned with the effects on the gums, and immune (disease self-defense) system. Gum (periodontal) disease is generally more common and more severe in patients with diabetes. This is because blood cells in the gums and jawbone that protect us from infection are not as effective. This means that the diabetic needs to work more diligently on oral hygiene, brushing and flossing, as well as make sure the disease is as controlled as possible. If you have a dental infection, and require either a root canal or need to have a tooth removed, there are some important things for you to remember. Make sure you eat your normal breakfast before you go to the dentist. If you are taking insulin, take your normal dosage unless your dentist and physician have agreed to alter the dosage. If you have not eaten and are in pain or feel a high degree of stress prior to a dental procedure, this can cause your blood sugar to drop. By eating (we use the expression, "keep them sweet") and

taking the proper amount of insulin, you reduce the potentially dangerous complication of hypoglycemia (low blood sugar). Diabetics, especially poorly controlled diabetics, are at an increased risk for infection that includes potential complications from dental infections. If your diabetes is under poor control "brittle", and your blood sugar is very high, dental surgical procedures may need to be delayed until you are under better control. In some cases, you may need to take antibiotics prior to certain dental treatments to reduce the risk of infection.

CREATIVE SMILES DENTAL The Ultimate Smile Make-Over and Tooth Whitening Center Dr. Nelly Lyn Montilla 16220 Nordhoff St. / Woodley (Beside Starbucks Coffee) North Hills, Ca 91343 Tel. No. (818) 893-1700 www.creativesmilesdental.com

The following information is provided as a general guideline. It is NOT intended in place of professional care. Since every pregnancy may vary, consult your physician or dentist for advice on your particular situation. (Advertising Supplement)

Not hurtin' in the Hamptons Exclusive resort area weathers downturn

RIDGEHAMPTON, NY—The good news this Memorial Day weekend is that there are plenty of real estate bargains available in New York's toney Hamptons, summer playground for America's rich and famous.

The bad news: It still costs big bucks to buy or rent a house or condo there. "Despite all the problems, we haven't seen the 'Bear Stearns houses' or the 'Merrill Lynch houses' come on the market for sale," said local real estate agent Andrew Saunders. "One here or there (goes up for sale), but we haven't seen dozens of them come on the market."

A 40-mile strip of beachfront on Long Island's eastern tip, the Hamptons have long been a popular summer spot for America's wealthy actors, authors and business executives.

Located about 100 miles from Manhattan, the area's famous full- or part-time residents range from comedian Jerry Seinfeld to hip-hop star Sean "Diddy" Combs.

The area is so exclusive that merely renting a Hamptons summer place often costs more than buying a house in many US locales.

For instance, the fabled Grey Gardens estate - located across from director Stephen Spielberg's East Hampton compound - costs \$200,000 to lease for just July.

Still, real estate firm Prudential Douglas Elliman recently reported that Hamptons first-quarter home sales fell 53.5 percent from year-ago levels, with median sale prices dropping 23.5 percent.

Gary DePersia of the Corcoran Group, a major local real estate player, said Hamptons homes are selling for as much as 40 percent discounts these days. "We have increased inventory, lower prices and sellers who are more negotiable," he said.

But local author Steven Gaines, who hosts a weekly radio program on Hamptons culture, said most residents are taking a wait-and-see approach toward the real estate downturn.

"When you reach a certain amount of wealth, like a lot of people in the Hamptons have," a recession just means "you're only half as rich as you were," he said.

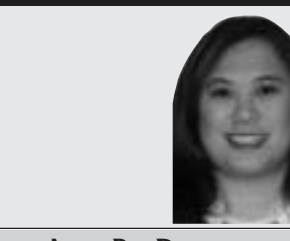
Gaines, who wrote a 1998 book called "Philistines at the Hedgerow: Passion and Property in the Hamptons," admits the downturn has brought some changes.

For instance, he's noticed that few residents have reclaimed cars from the Bridgehampton Motor Club, where the wealthy stash their Mercedes-Benzes, BMWs and Ferraris for the winter.

"All the Bentleys, all the classic cars are staying in - the guys are going to drive their wives' Priuses," Gaines said. "There's a certain element of shame and embarrassment now. (People) are afraid their neighbors are going to think their bonuses were too big." (AP)

Far from reform: local law enforcements given the task to check immigration status for all inmates

PROBLEM SOLVED



ATTY. PIA DYQUIANCO

optimizing the criminal alien enforcement process." The Mission of Secure Communities. Available at: www.ice.gov

Secure Communities will permit arresting officers to take the fingerprints of inmates and match them with the federal immigration databases. Authorities hope that this will reveal deportable undocumented immigrants before they are released from custody. Secure Communities is more effective because all inmates are screened and not just those that admit they are foreign born. This is why convicted felons with multiple aliases or have lied about being born in the US are now being identified and placed in proper immigration proceedings. This program was started back in October 2008 and currently operating in forty eight counties in the U.S. including Dallas, Houston, Miami, Boston, and Phoenix.

Last year, Immigration Customs and Enforcement (ICE) deported 117,000 criminal illegal aliens. Secure Communities would increase this number to 10 times the amount of deportable criminal illegal aliens. Presently, there are 3,100 local jails and 1,200 federal and state prisons in the United States. In this program, ICE will give priority to deporting the most dangerous offenders: national security risks and those convicted of violent crimes. President Obama in his 2010 budget has already requested congress allocate \$200 million for this program. By the end of 2012, federal agencies plan to expand this program in all local jails nationwide.

California has now begun implementing Secure Communities:

Today, the Los Angeles Times has announced that Los Angeles, Ventura and San Diego will check immigration status as inmates enter jail. This program has already hit home. What does this mean? The tasks of pin pointing undocumented persons have been tasked to our local law

enforcement agencies. This will allow for those who are arrested and booked in local jails to have their immigration status checked and after a sentence is served will be transferred to immigration custody for possible deportation proceedings to begin.

It also has been announced that more than forty Los Angeles County police agencies will participate in Secure Communities enabling law enforcement to screen every inmate booked at any local facilities. Even if the inmate has already been released on bail or acquittal, immigration agents may subsequently arrest them. This appears to be just the beginning of stricter immigration policies. So what should you each person waiting for immigration reform and perhaps their priority date to become current do?

Remember to abide by the law. Don't commit crimes and don't put yourself at risk of being involved with the law. If you are unsure about your immigration status, don't wait until you are already in proceedings in immigration court. The best move is to seek the advice of a competent and knowledgeable immigration attorney and find ways to legalize your immigration status. Be proactive. However should you already been in immigration court, make sure that you have an immigration attorney to represent your rights.

The lawyers of Wilner & O'Reilly are ready to assist in all immigration matters. With three convenient locations in Cerritos, Irvine, and Riverside, we provide sound legal advice and hopefully assist in keeping you out of immigration court proceedings. Call us for a free consultation today at (562)207-6789.

Pia Marie Dyquianco is an Associate Attorney at the Business and Transactional Immigration Department. She also is experienced in handling family based immigration cases. Ms. Dyquianco is fluent in Tagalog and Ilocano.

(Advertising Supplement)

22 foreign automakers to skip Tokyo Motor Show

TOKYO—More than 20 major carmakers will skip the Tokyo Motor Show later this year to save costs.

A spokeswoman for the Japan Automobile Manufacturers Association, which sponsors the biennial auto event, said Thursday that the number of dropouts is "unprecedented."

Twenty-two foreign carmakers will pass on the

Tokyo Motor Show, including General Motors, Ford, Volkswagen, BMW and Porsche.

Only four foreign makers will attend the event, including South Korea's Hyundai, Italy's Ferrari and British race car maker Lotus.

Japan's top three automakers - Toyota, Nissan and Honda - are scheduled to join the event. (AP)

NH lawmakers applaud change in veterans program

CONCORD, NH—After getting a request from New Hampshire's congressional delegation, the government is temporarily suspending a requirement that some veterans repay retirement benefits if they re-enlist.

Members of the military who accept early retirement money but then re-enlist have to repay that money by having it deducted from their pensions. Sen. Jeanne Shaheen and Rep. Carol Shea-Porter intervened after hearing from a Dover man who was losing more than half his monthly pension check. They sponsored a bill to address what they called an unnecessarily harsh repayment formula and asked the Department of Defense's accounting arm to suspend it.

The accounting office agreed last May 21, saying the policy would be suspended pending a formal review.

Sen. Judd Gregg and Rep. Paul Hodes are co-sponsors of the legislation. (AP)

Law Offices Of LARRY BAUTISTA YANG

BANKRUPTCY

WE ARE A DEBT RELIEF AGENCY. WE REPRESENT DEBTORS IN CHAPTER 7, 13, 11 AND 12 OF THE NEW BANKRUPTCY LAW. THIS INCLUDES RELIEF FROM MORTGAGE PAYMENT DEFAULTS AND PRE-FORECLOSURE RELIEF FOR RESIDENCES AND OTHER REAL ESTATE PROPERTIES.

30th Year in Law Practice

Let Me Help You Wipe Out Debt & Obtain A Fresh Start THOUSANDS OF SUCCESSFUL CASES IN LA, ORANGE, RIVERSIDE, SAN BERNARDINO, VENTURA & SAN DIEGO COUNTIES • CHAPTER 7, 11, 12 & 13

Have you mortgaged your grandchildren to Mastercard and Visa? Snowed under by a mountain of debt? Worried about losing your home and car? Call me immediately today! Yes, I speak Tagalog. No, I won't charge you for consultation. I can help you keep your home, car and other personal properties.



LARRY YANG is a graduate of Georgetown University Law Center with a master's degree in Law and practices before California State Courts, United States District Courts, the California Appeals for the 9th Circuit and U.S. Bankruptcy Courts.

I look forward to help you: discharge debts; stop foreclosures; wage garnishments; stop harassments from collectors; stop repossessions.

- LOAN MODIFICATION
- DIVORCE & FAMILY LAW
- CIVIL, BUSINESS & REAL ESTATE LITIGATION & TRIALS

Call our office for appointment (626) 284-1142 and ask for Angie or Jess. Atty. Yang will personally interview you

Filipino Po Tayo. Free Consultation. Weekend & Evening Appointments Available.

1000 S. Fremont Ave., Building A-1, Suite 1125 Unit 58, Alhambra, CA 91803